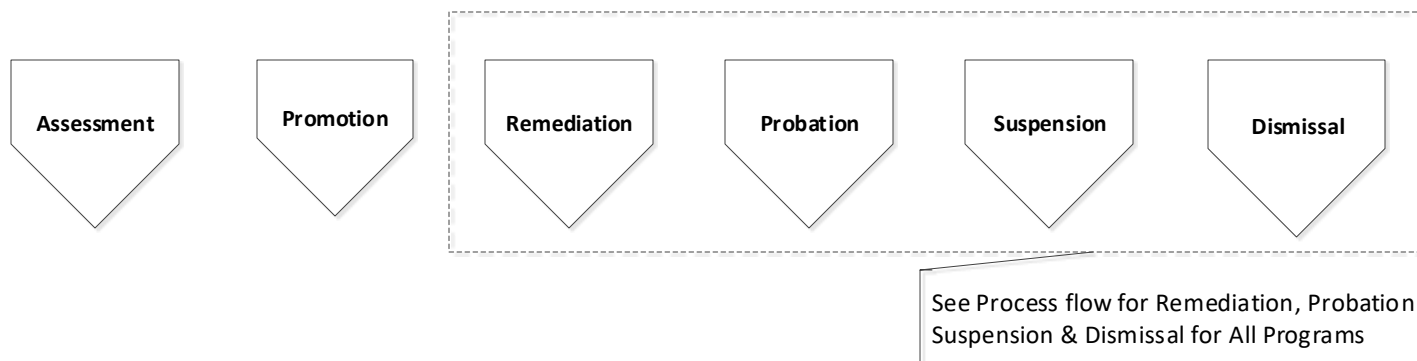


PGME Process:

Assessment, Progression & Promotion, Remediation, Probation, Suspension, Dismissal for Competency Based Programs under the RCPSC

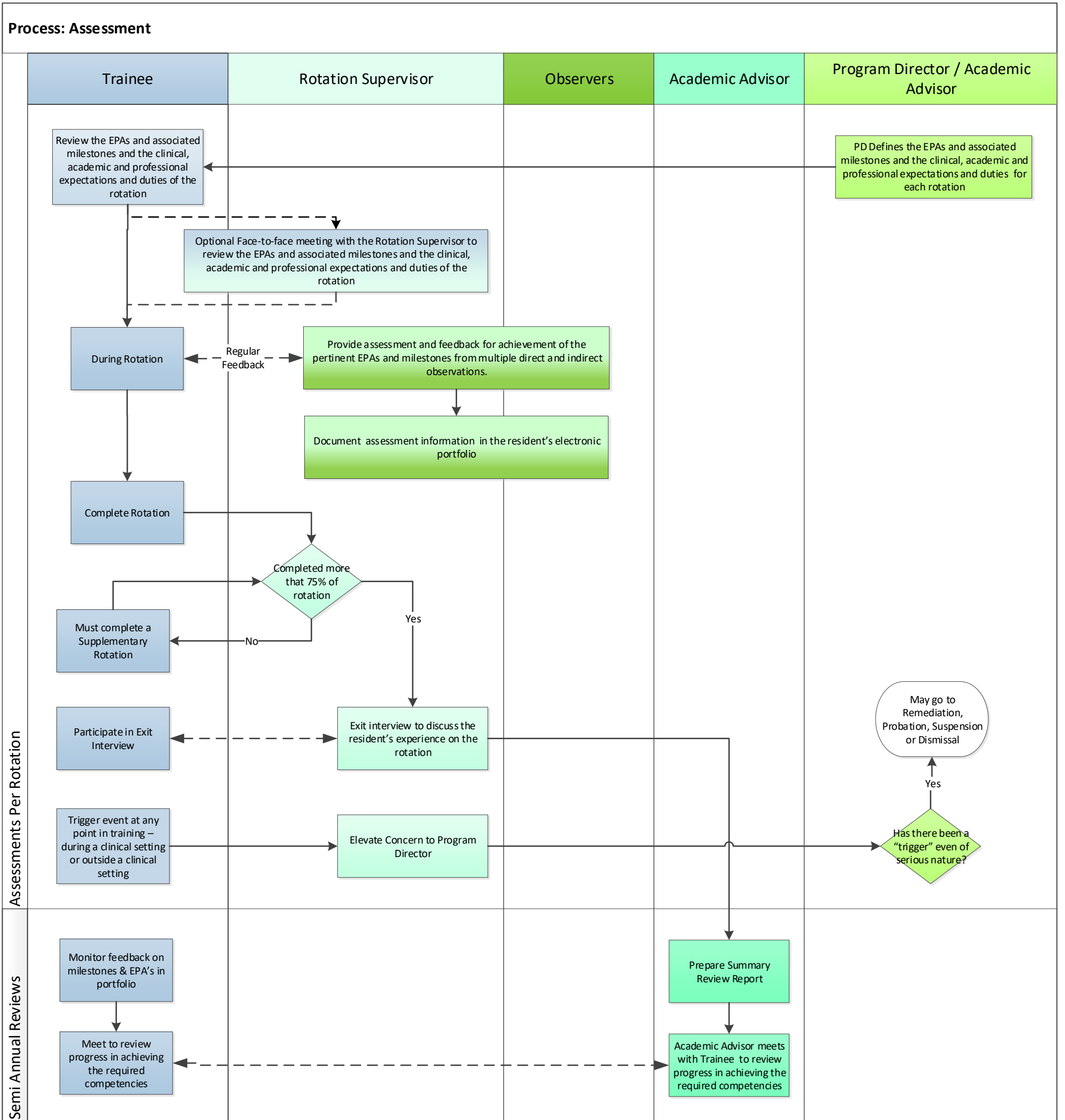
The PGME Resident Assessment, Promotion, Remediation, Probation, Suspension and Dismissal Policy, PGME Residents in a Competency Based must be followed



References: PGME Resident Assessment, Promotion, Remediation, Probation, Suspension and Dismissal Policy

Process: Assessment, Progression & Promotion, Remediation, Probation, Suspension, Dismissal for Competency Based Programs under the RCPSC	Prepared By: PGME Office	Approved By: PGME Office	Date Page 1 of 3	Date August 2022
--	-----------------------------	-----------------------------	---------------------	---------------------

PGME Process: Assessment, Progression & Promotion, Remediation, Probation, Suspension, Dismissal for Competency Based Programs under the RCPSC



PGME Process:

Assessment, Promotion, Remediation, Probation, Suspension, Dismissal for Competency Based Programs under the RCPSC

