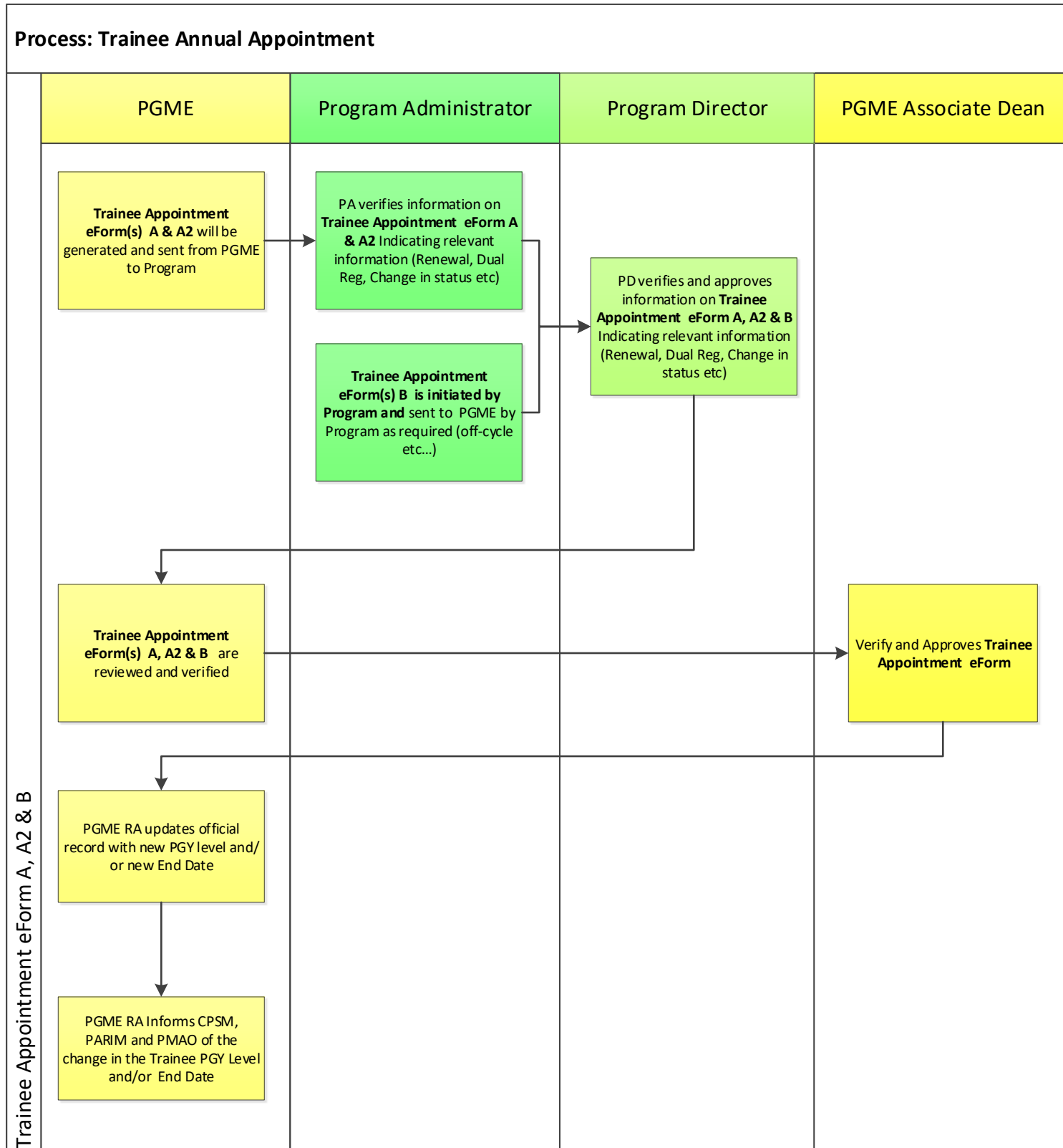




Please refer to the PGME Trainee Appointment Guideline for detailed information regarding:

- Annual Trainee Appointments
- Changes to Appointments
- Completion of Training
- Dual Registration
- Withdrawal
- Termination



References: Allocation of Resident Program Positions

Alternate Routes of Entry to Residency - Transfer, Re-Entry, Non-CaRMs

Resident Assessment

Process: Trainee Annual Appointment eForm	Prepared By: PGME Office	Approved By: PGME Office	Date Feb 2020
---	-----------------------------	-----------------------------	------------------