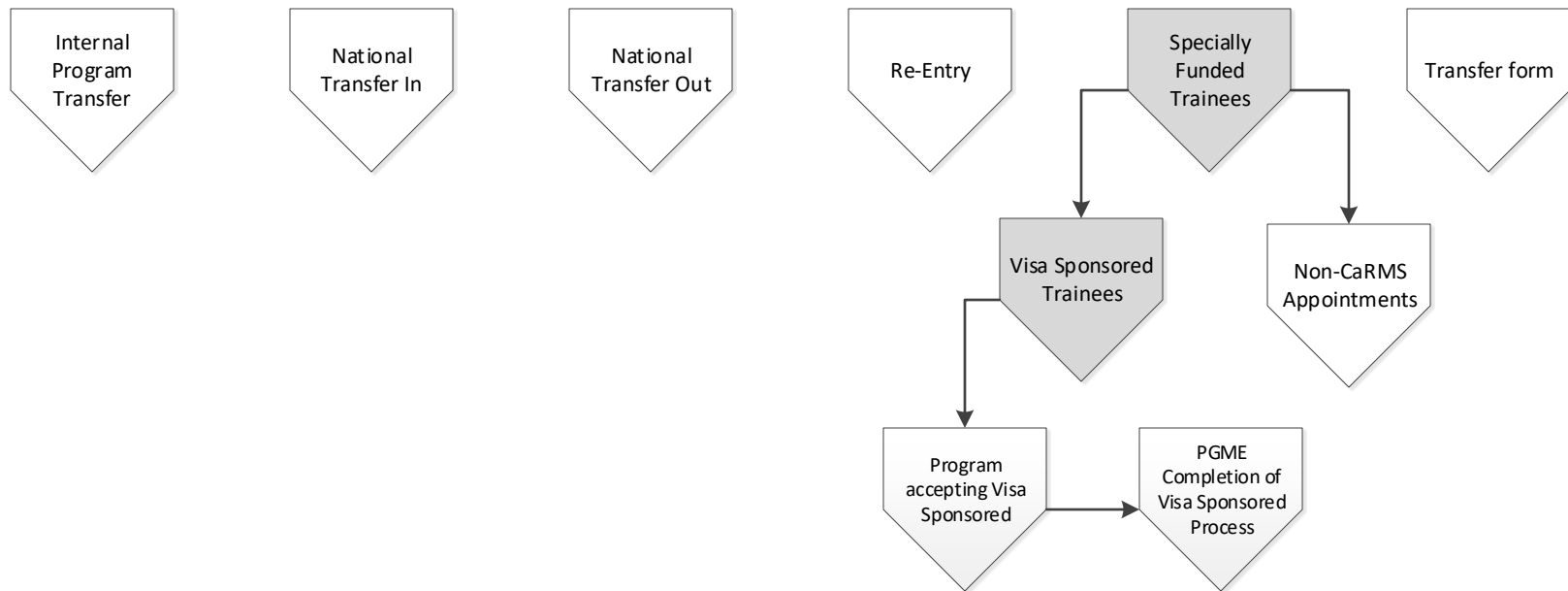


PGME Process: How to Process Alternate Routes of Entry to Residency - Transfer, Re-Entry, Non-CaRMS (including Visa Sponsored Trainees) to PGME

Programs are required to follow:
PGME Alternate Routes of Entry to Residency - Transfer, Re-Entry, Non-CaRMS Policy



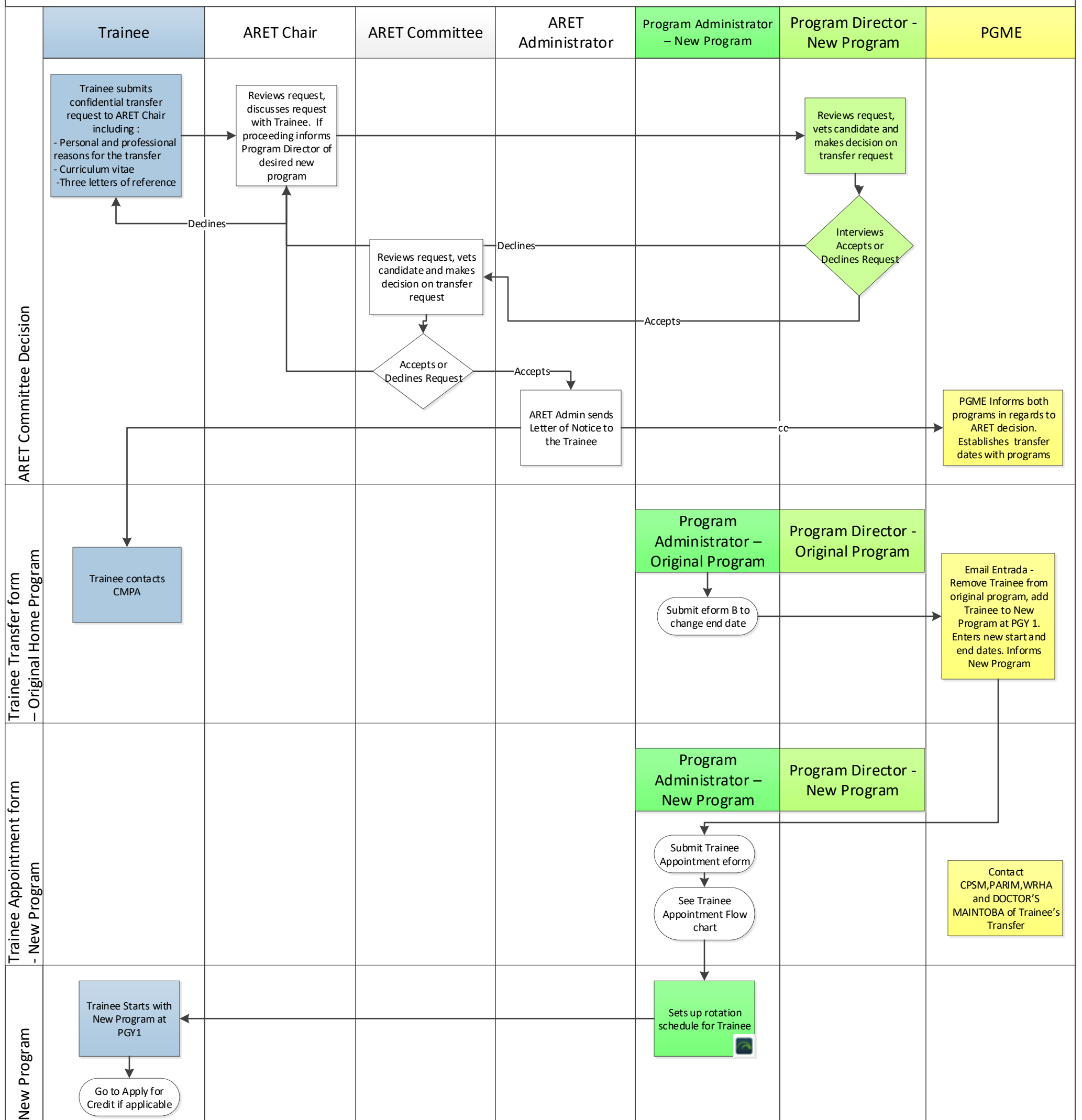
References: PGME Alternate Routes of Entry to Residency Policy
AFMC PGME National Transfer Guidelines

Process: Alternate Routes of Entry to Residency	Prepared By: PGME Office	Approved By: PGME Office	Date Page 1 of 8	Date August 2022
---	-----------------------------	-----------------------------	---------------------	---------------------

PGME Process: How to Process a Internal Program Transfer

Programs are required to follow:
PGME Alternate Routes of Entry to Residency Policy

Process: Internal Program Transfer



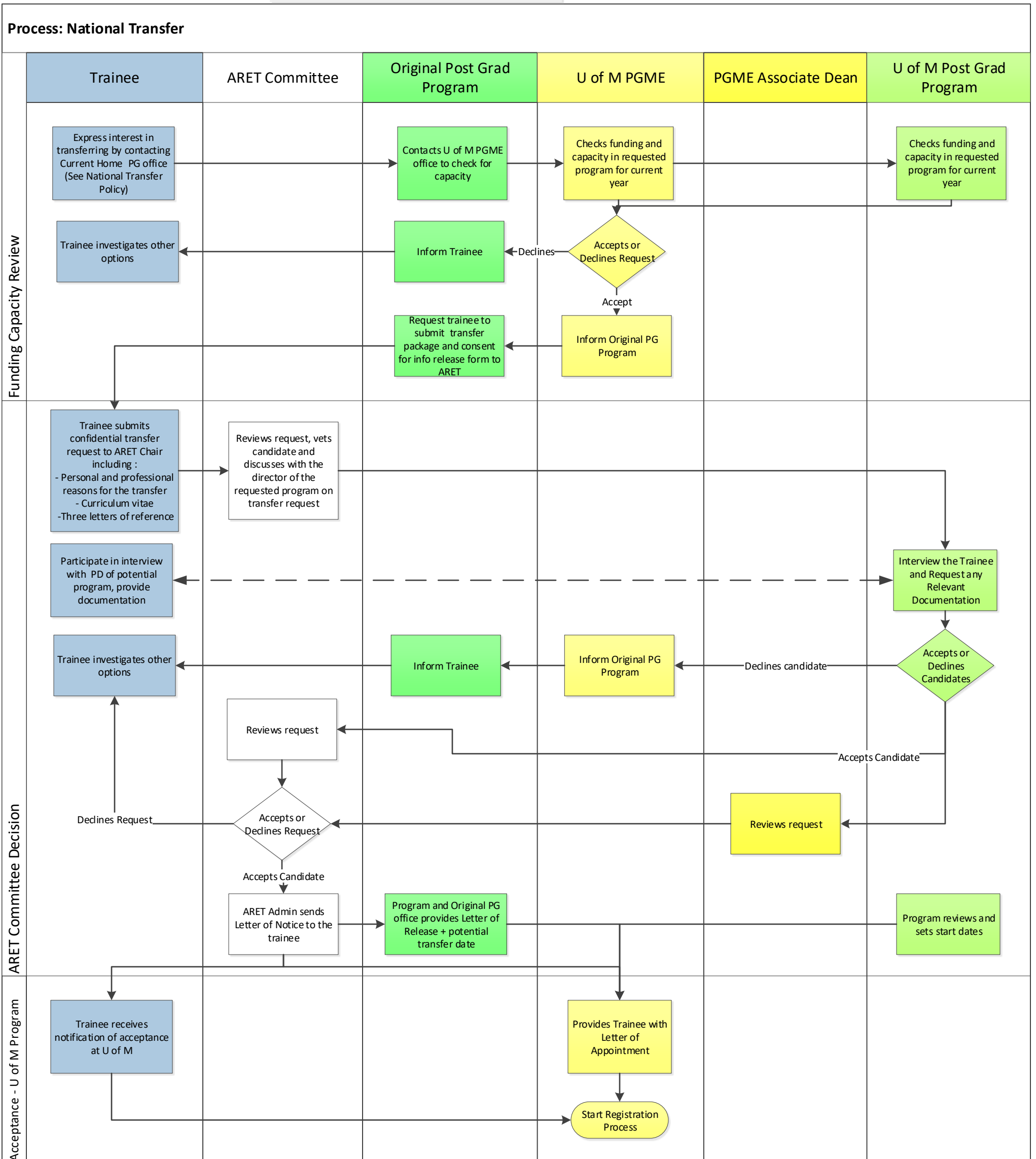
PGME Process:

How to Process a National Transfer from a External Program in to U of M

Programs are required to follow:

PGME Alternate Routes of Entry to Residency Policy

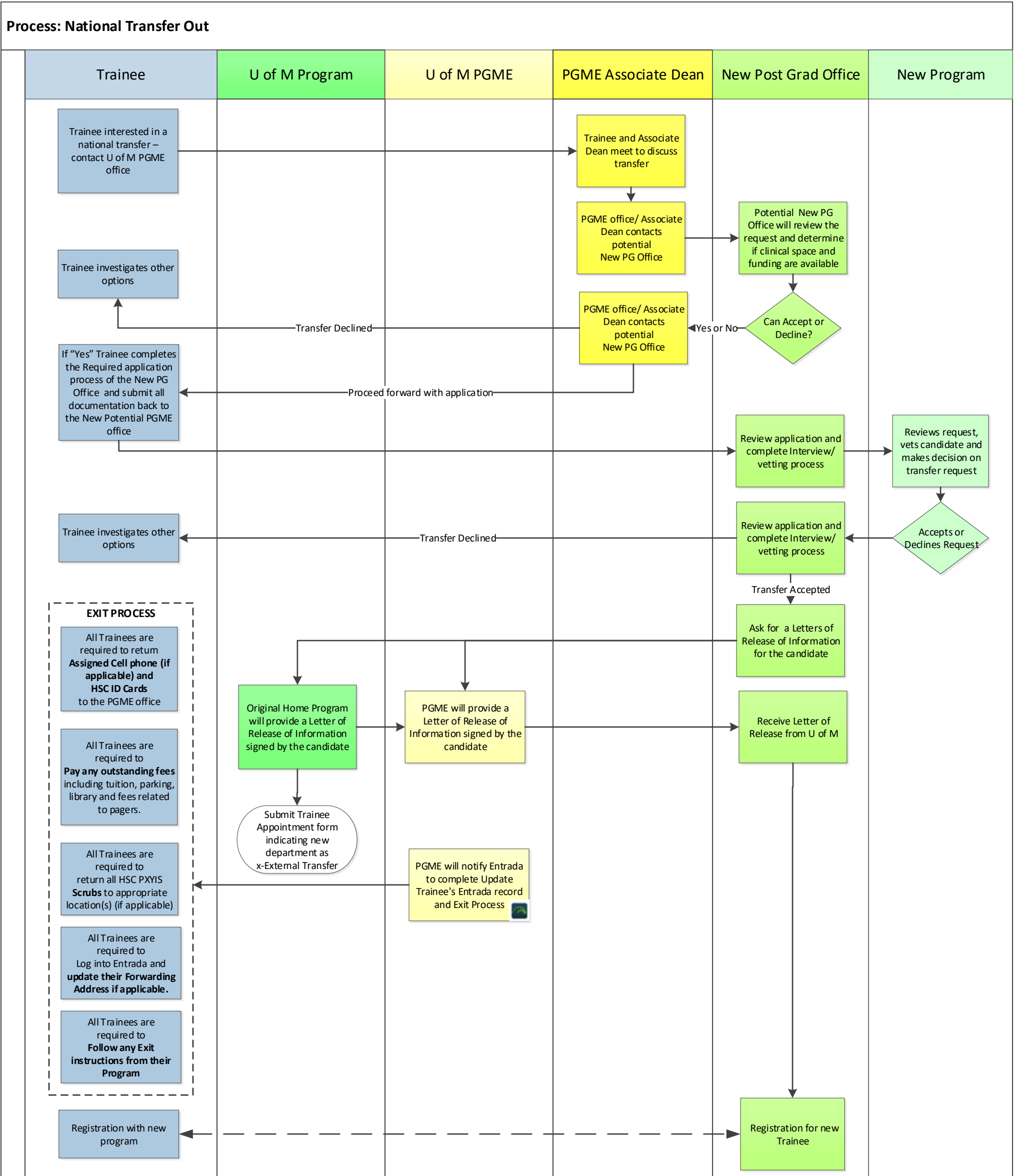
AFMC PGME National Transfer Guidelines



PGME Process:

How to Process a National Transfer from a U of M PGME program to an External PGME Program

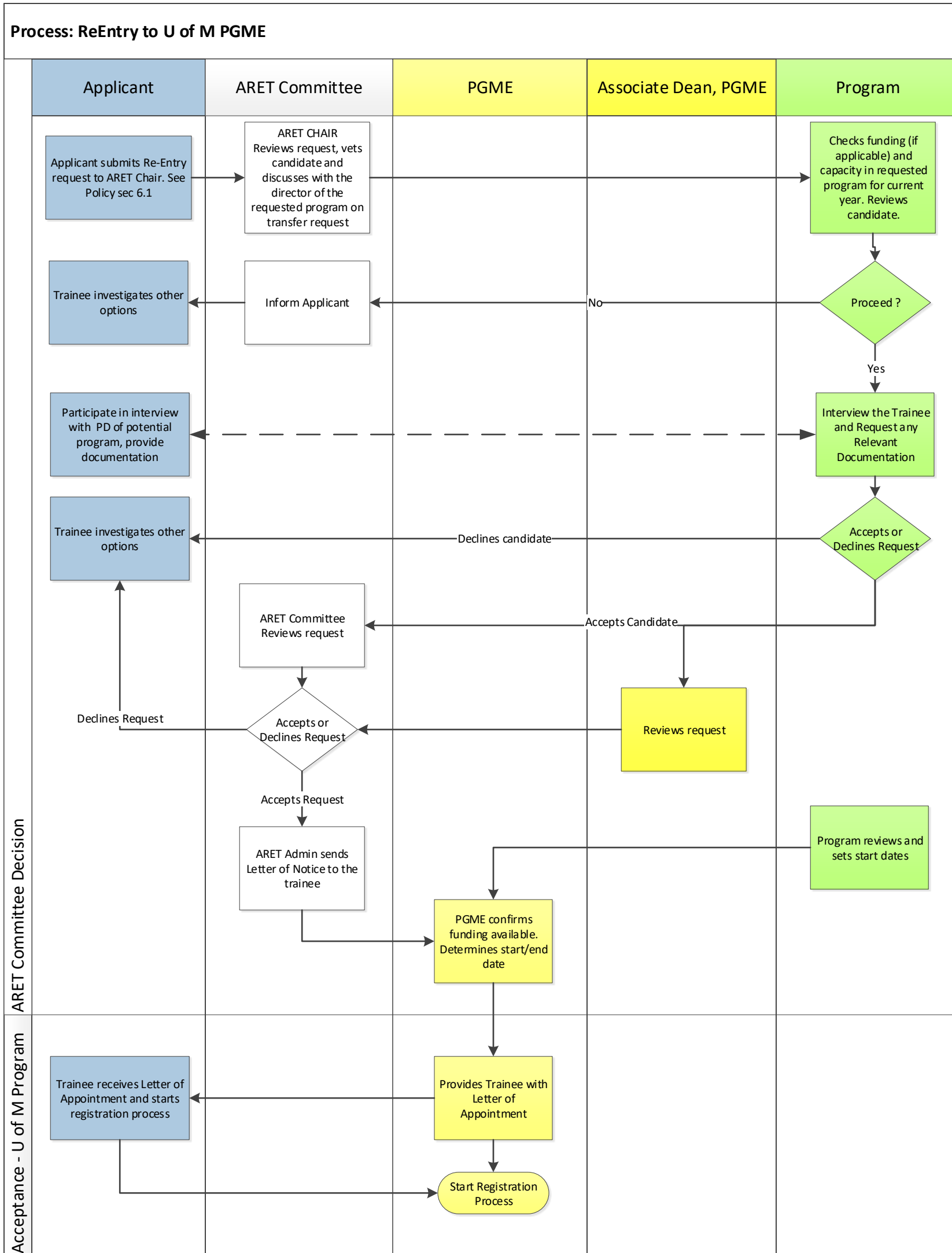
Programs are required to follow: [AFMC PGME National Transfer Guidelines](#)



PGME Process: How to Process a Re-Entry to PGME

Re-Entry into postgraduate training to pursue another discipline enables practicing physicians to switch practice for many reasons including changes in professional interests, evolving personal circumstances, or reduced employment prospects.

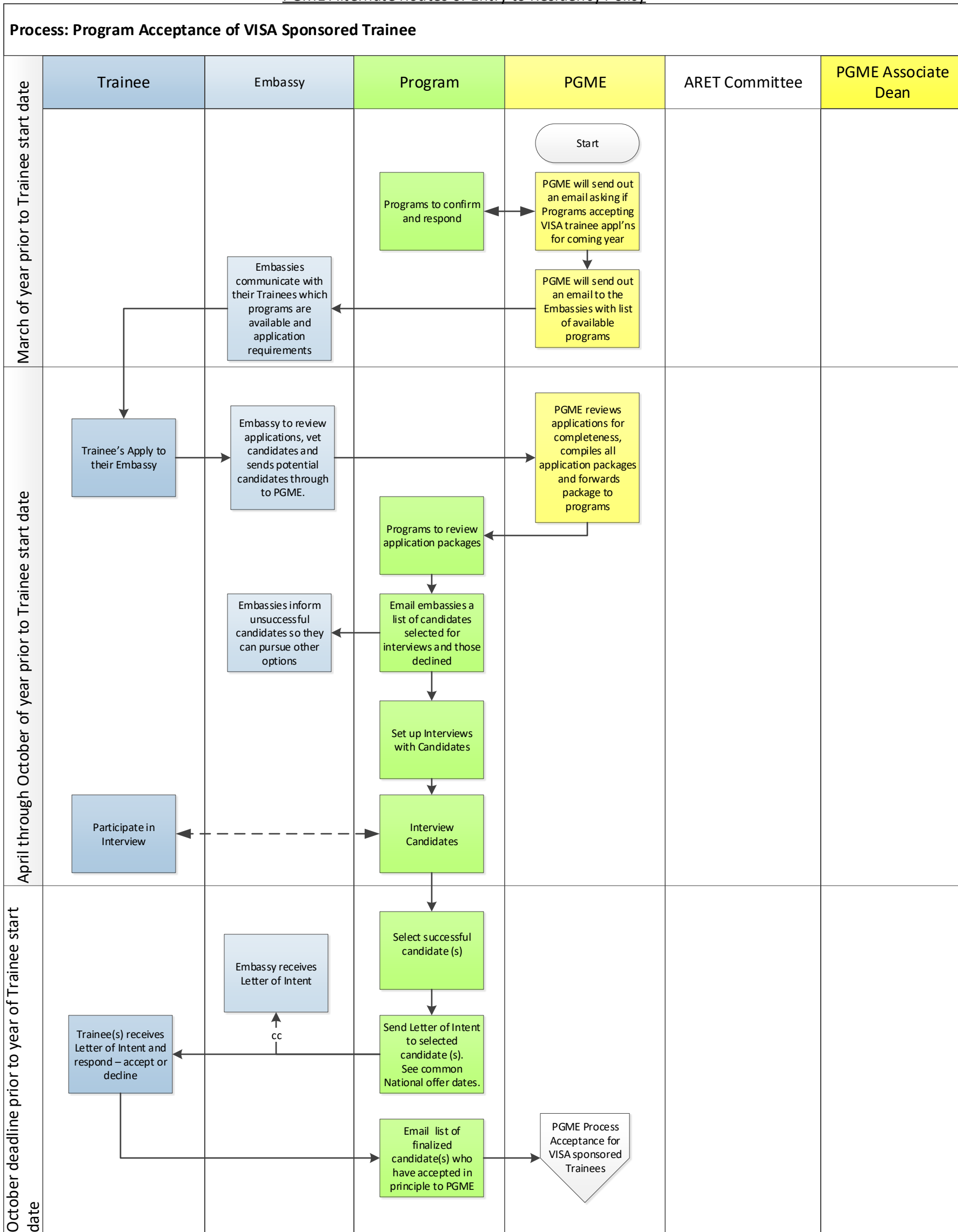
Programs are required to follow:
PGME Alternate Routes of Entry to Residency Policy



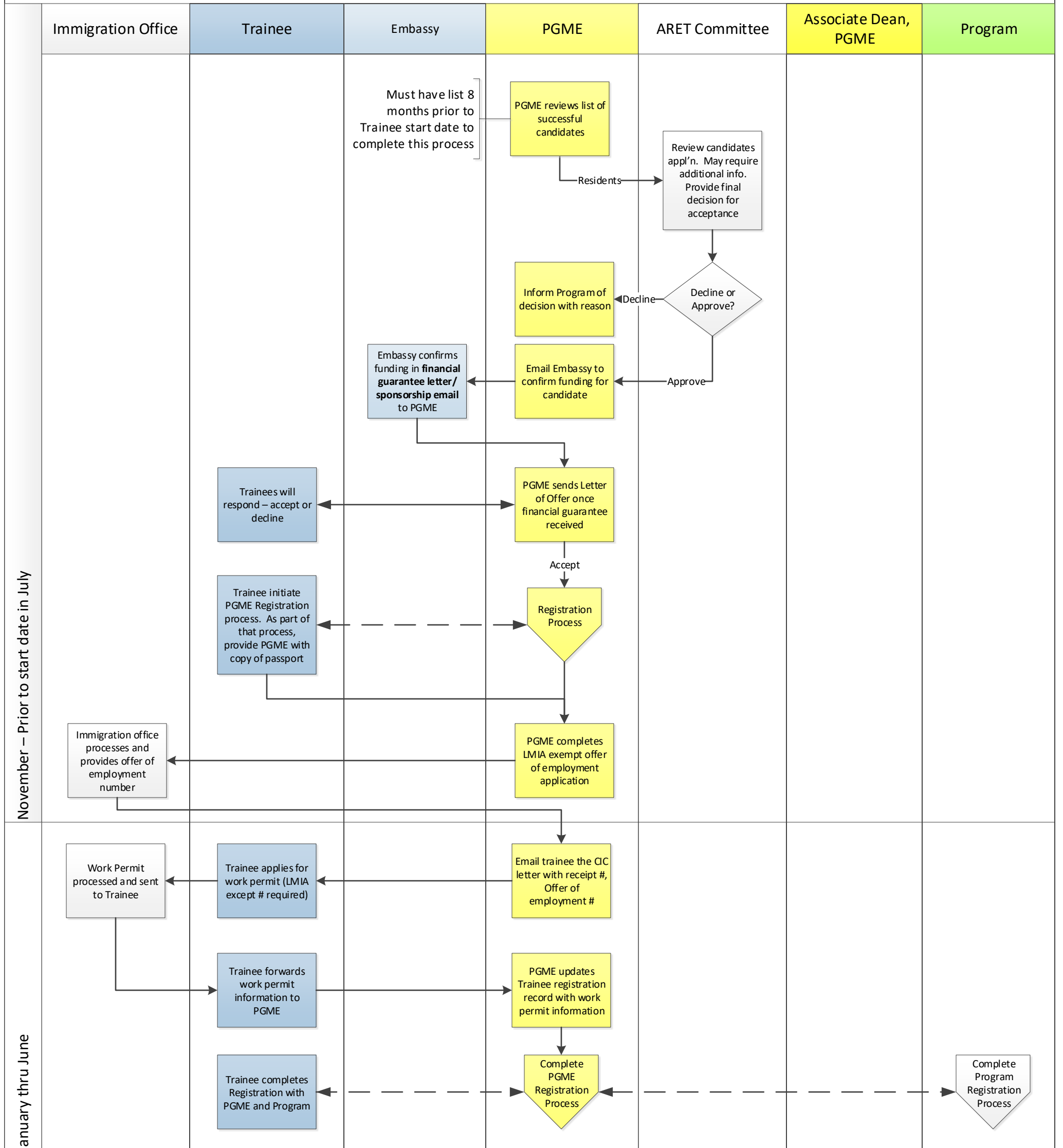
PGME Process:

How to Accept a VISA Sponsored Trainees for a Program Appointment

Programs are required to follow: Postgraduate Visa Sponsored Trainee Funding & PGME Alternate Routes of Entry to Residency Policy



Process: PGME Acceptance of VISA Sponsored Trainees



PGME Process: How to Obtain Approval for Non-CaRMS Positions

Programs are required to follow: [PGME Alternate Routes of Entry to Residency Policy](#)

