

PGME Processes:

Leave of Absence (LOA), Extension of an LOA, Return from an LOA, and Waiver of Training

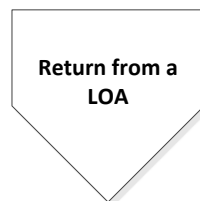
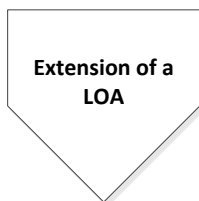
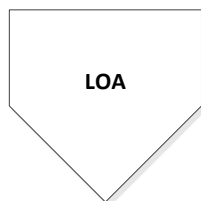
This process must follow PGME LOA and Waiver of Training Policy and the PARIM Collective Agreement.

Notes:

Applicable Absence Reasons: - LOA (eg medical leave supported with a doctor’s note), LOA-B (Bereavement), LOA–EDU (Educational) , LOA-M (Maternity), LOA-P (Paternity), LOA–Partner.

Not Applicable:

- For Conferences, Holy Day, Statutory (Lieu Day), Vacation, Exam days and Illness (unplanned Sick Days) please refer to Absence Module in Curriculum Management System
- Academic Sessions – will prepopulate in Curriculum Management System Calendar as per the Departmental/Educational Event Set up



Important References:

PGME Assessment Policies (CFPC, Time-Based, RCPSC)

PGME LOA and Waiver of Training Policy

PARIM Collective Agreement

Shared Health Request for LOA Form

Process: Leave of Absence	Prepared By: PGME Office	Approved By: PGME Office	Date March 2021
-------------------------------------	-----------------------------	-----------------------------	--------------------

PGME Process - How to Process Leave of Absence (LOA)

This process must follow PGME LOA and Waiver of Training Policy and the PARIM Collective Agreement.

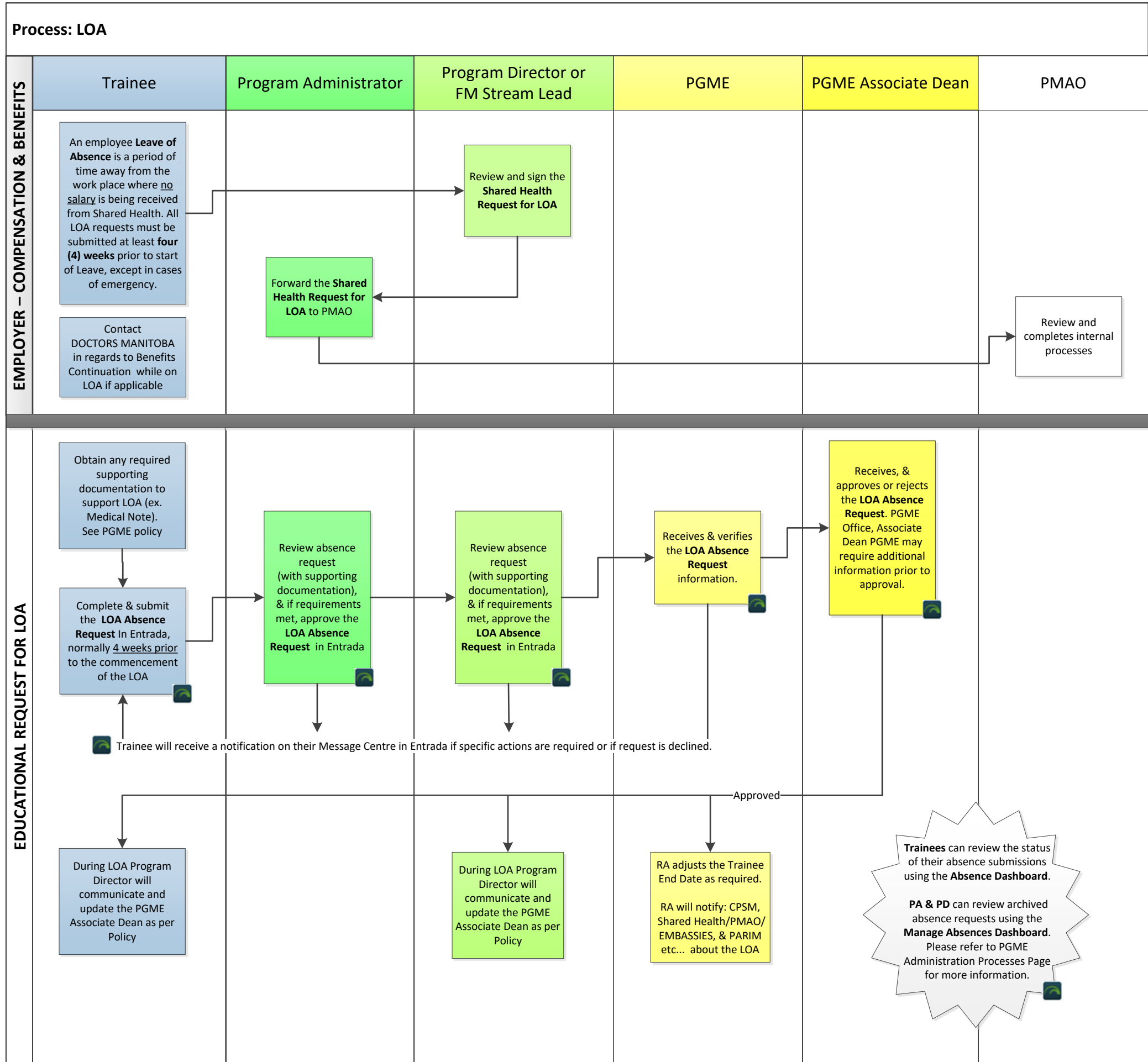
Notes:

Applicable: - LOA (eg medical leave supported with a doctor's note), LOA-B (Bereavement), LOA-EDU (Educational) , LOA-M (Maternity), LOA-P (Paternity), LOA-Partner.

Not Applicable: - For Conferences, Holy Day, Statutory (Lieu Day), Vacation, Exam days and Illness (unplanned Sick Days) please refer to Absence Module in Curriculum Management System
 - Academic Sessions – will prepopulate in Curriculum Management System Calendar as per the Departmental/Educational Event Set up



Process: LOA



Important References:

- PGME Assessment Policies (CFPC, Time-Based, RCPSC)
- PGME LOA and Waiver of Training Policy
- Shared Health Request for LOA Form
- PARIM Collective Agreement

Process: Leave of Absence	Prepared By: PGME Office	Approved By: PGME Office	Page 2 of 5	Date March 2021
-------------------------------------	-----------------------------	-----------------------------	-------------	--------------------

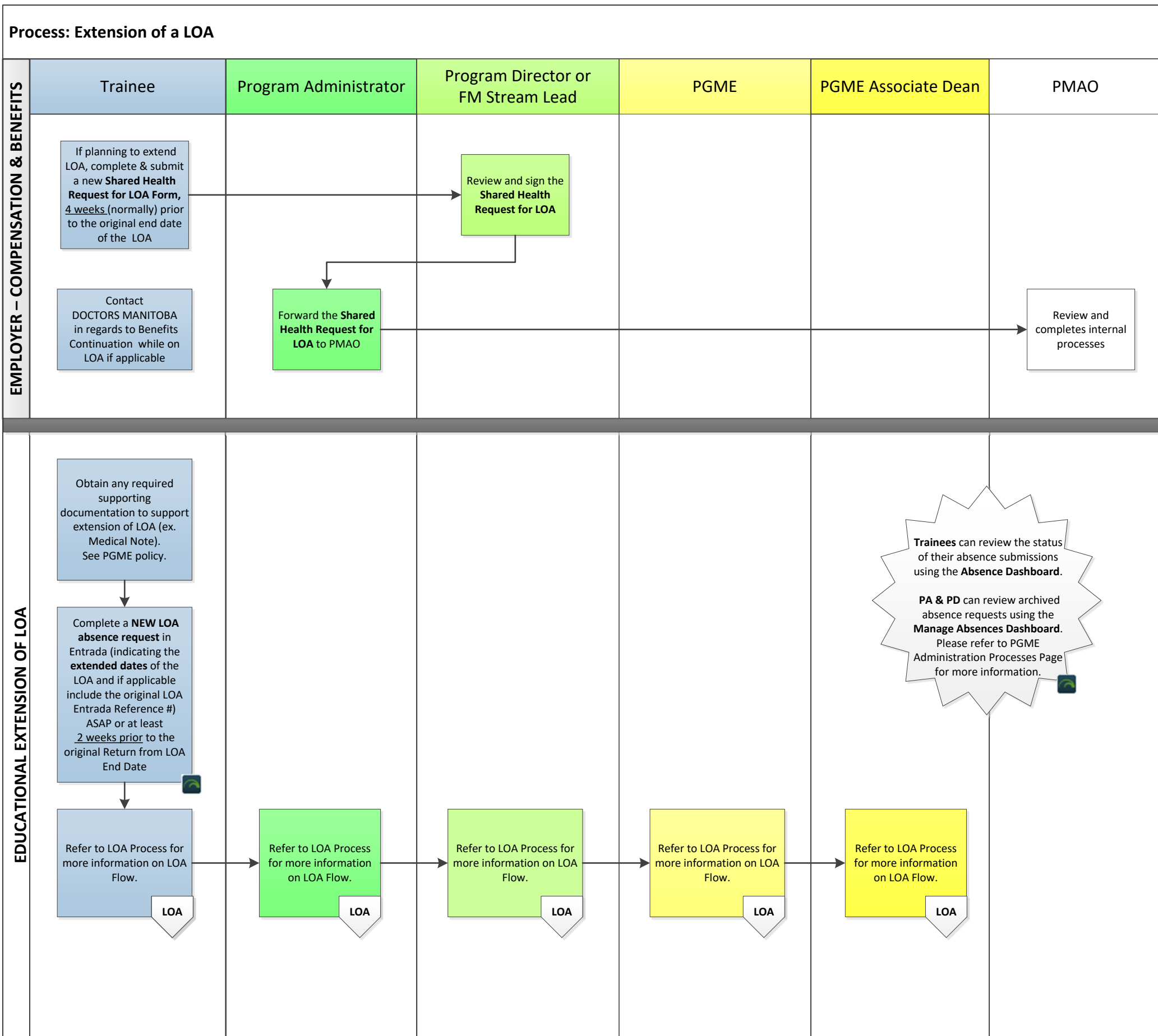
PGME Process - How to Process an Extension of a Leave of Absence (LOA)

This process must follow PGME LOA and Waiver of Training Policy and the PARIM Collective Agreement.

Notes:

Applicable: - LOA (eg medical leave supported with a doctor's note), LOA-B (Bereavement), LOA-EDU (Educational) , LOA-M (Maternity), LOA-P (Paternity), LOA-Partner.

Not Applicable: - For Conferences, Holy Day, Statutory (Lieu Day), Vacation, Exam days and Illness (unplanned Sick Days) please refer to Absence Module in Curriculum Management System
- Academic Sessions – will prepopulate in Curriculum Management System Calendar as per the Departmental/Educational Event Set up



Important References:

- PGME Assessment Policies (CFPC, Time-Based, RCPSC)
- PGME LOA and Waiver of Training Policy
- Shared Health Request for LOA Form
- PARIM Collective Agreement

Process: Extension of a Leave of Absence	Prepared By: PGME Office	Approved By: PGME Office	Page 3 of 5	Date March 2021
--	-----------------------------	-----------------------------	-------------	--------------------

PGME Process - How to Process a Return from Leave of Absence (LOA)

This process must follow PGME LOA and Waiver of Training Policy and the PARIM Collective Agreement.

Notes:

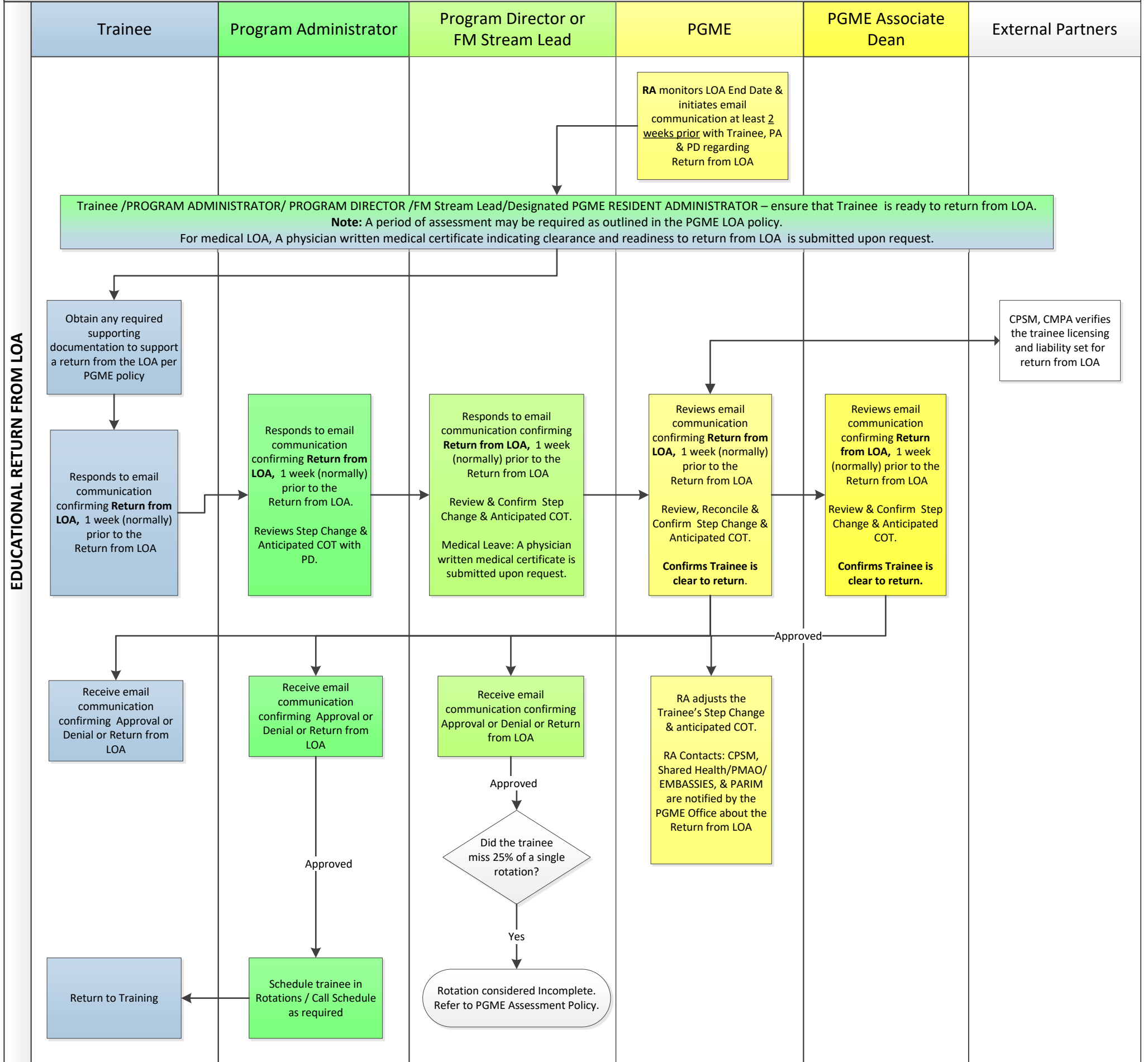
Applicable: - LOA (eg medical leave supported with a doctor's note), LOA-B (Bereavement), LOA-EDU (Educational), LOA-M (Maternity), LOA-P (Paternity), LOA-Partner.

Not Applicable:

- For Conferences, Holy Day, Statutory (Lieu Day), Vacation, Exam days and Illness (unplanned Sick Days) please refer to Absence Module in Curriculum Management System
 - Academic Sessions – will prepopulate in Curriculum Management System Calendar as per the Departmental/Educational Event Set up



Process: Return from a LOA



Important References:

- PGME Assessment Policies (CFPC, Time-Based, RCPSC)
- PGME LOA and Waiver of Training Policy
- Shared Health Request for LOA Form
- PARIM Collective Agreement

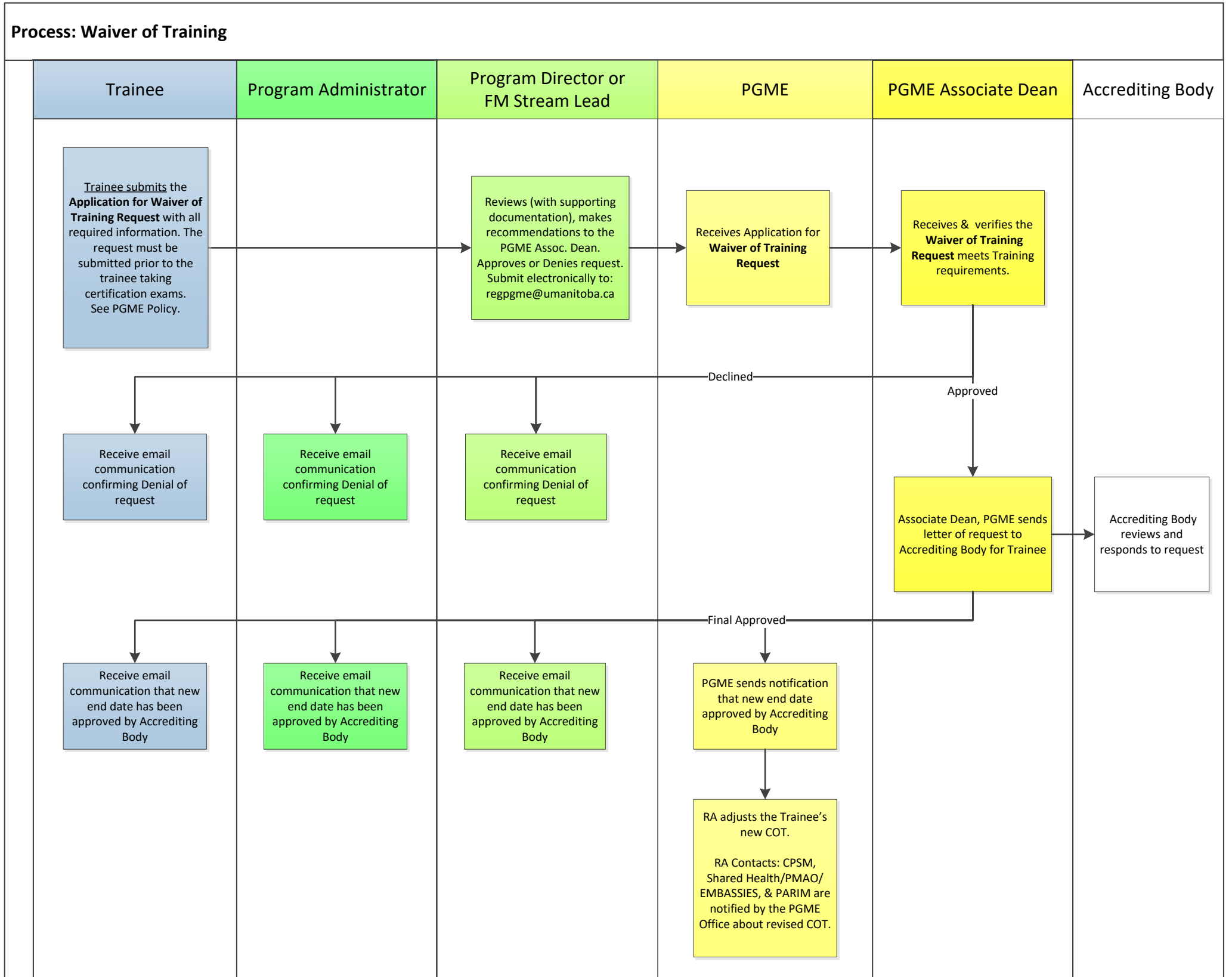
Process: Return from of a Leave of Absence	Prepared By: PGME Office	Approved By: PGME Office	Page 4 of 5	Date March 2021
--	-----------------------------	-----------------------------	-------------	--------------------

Waiver of Training

Notes:

- A Waiver in Training is the granting of a reduction of time in residency training following an approved leave of absence.
- The RCPSC and CCFP restricts the time allowed for Waivers of Training. Please see References under PGME Policy.
- An Application for Waiver of Training can only occur in the final year of training prior to taking certification exams

Process: Waiver of Training



Important References:

- PGME Assessment Policies (CFPC, Time-Based, RCPSC)
- PGME LOA and Waiver of Training Policy
- Shared Health Request for LOA Form
- PARIM Collective Agreement

Process:	Prepared By:	Approved By:		Date
Waiver of Training	PGME Office	PGME Office	Page 5 of 5	March 2021