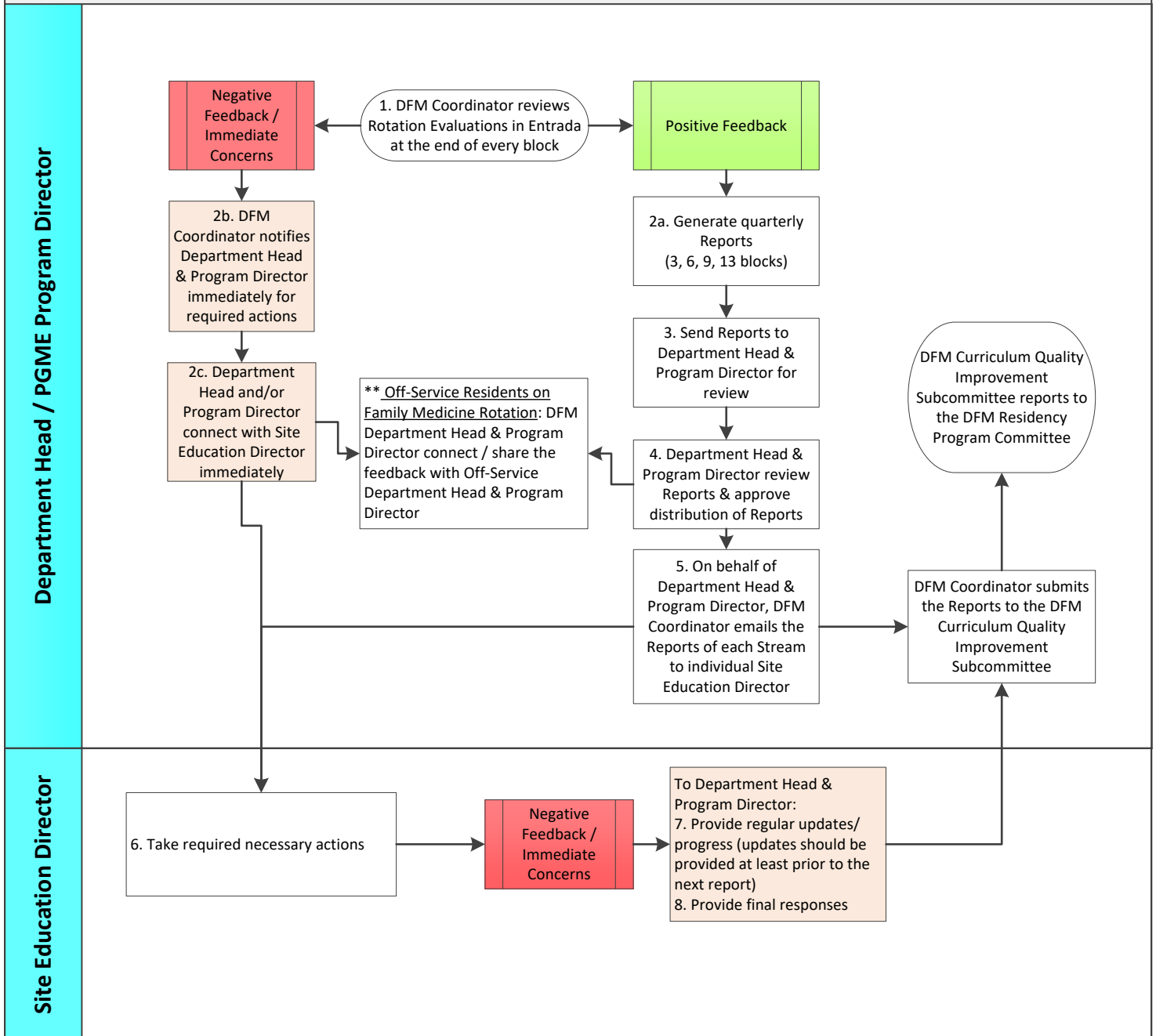


Rotation Evaluation

Purpose: This process is to provide the flow of how the Rotation Evaluations Report are reviewed and distributed to the Streams for the following:

- Family Medicine Block Time (FMBT) Rotations
- Family Medicine own Rotations (i.e. Elective, Out of Province & International)
- Off-Service Residents on Family Medicine Rotations

**** Threshold of 3 evaluations will be shared to protect anonymity of the residents**



Effective Date: March 18, 2020 **until CPGME Rady Faculty's official/final process communicated

Section: Postgraduate Medical Education (PGME)

Contact: Coordinator, Projects and Program Evaluation

Reviewed/Approved By:

- March 6, 2020: Department Head, Postgrad Program Director, Associate Director, Quality Improvement, Scholarship & Informatics, Managing Director, Education Manager & Coordinator, Projects and Program Evaluation

- March 18, 2020: Residency Program Committee