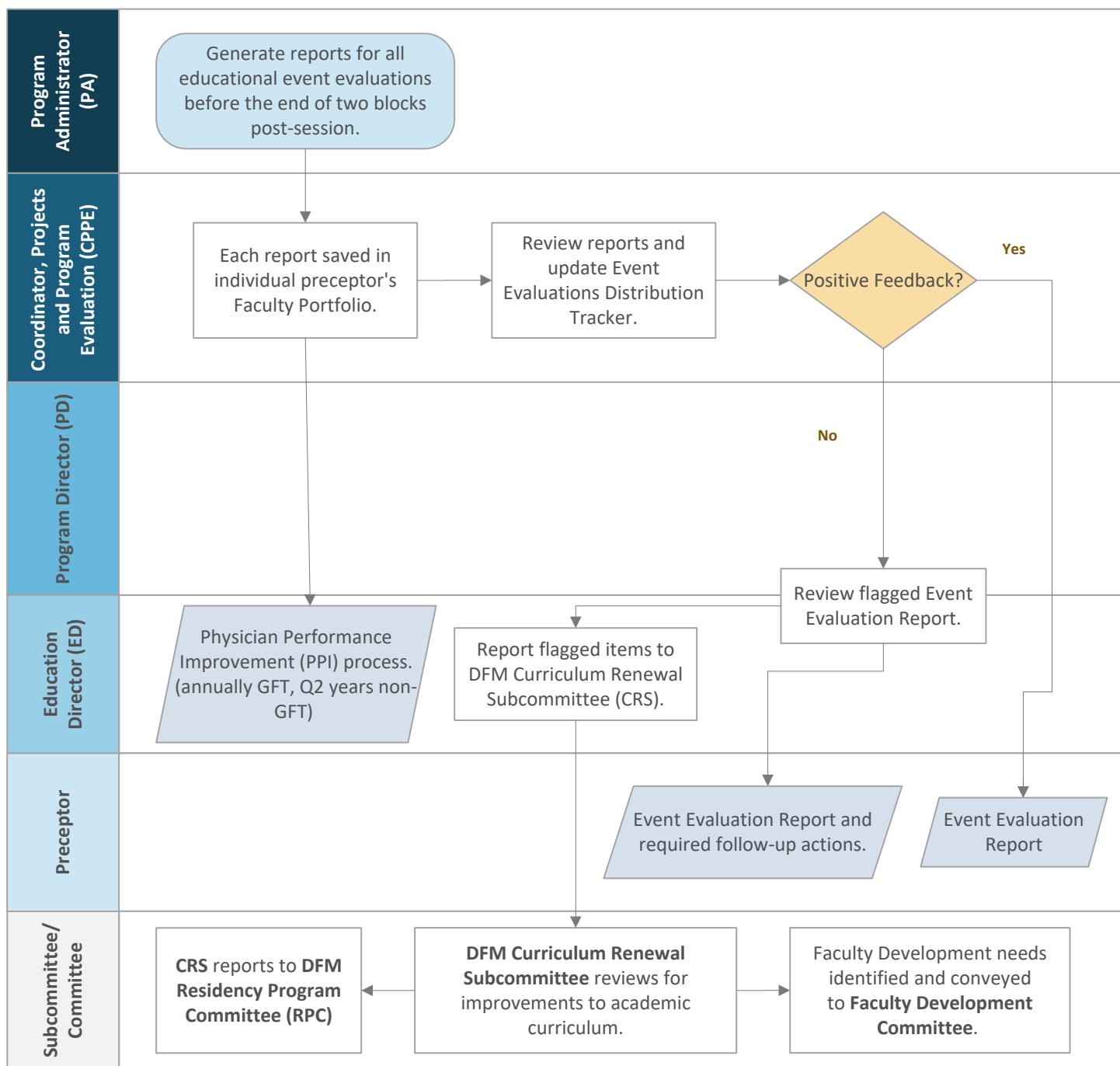




## EDUCATIONAL EVENTS FEEDBACK

**PURPOSE:** This process is to provide the flow of how the Educational Events (i.e. Academic Day, Academic Half Day, etc.) feedback are reviewed, distributed, and for other required actions.



Effective Date: June 04, 2025

Section: Postgraduate Medical Education (PGME)

Reviewed/Approved By:

May, 28, 2025 - Curriculum Renewal Subcommittee (CRS)

June 04, 2025 - Residency Program Committee (RPC)